



HAC-UAN480/MU Manual

Version 2.2C



SHENZHEN HAC TELECOM TECHNOLOGY CO., LTD

Address : Fl.6, Building 2, Jiuxiangling New Industry Park, No.4227, Xilihu Road, Nanshan, Shenzhen, China.

Tel : +86-755-23981078

Fax : +86-755-23981007

E-mail : webmaster@rf-module-china.com

Website : <http://www.rf-module-china.com>



Catalogue

I. Summarization of HAC-UAN480/MU	2
II. Functions of HAC-UAN480/MU	2
III. Definition of DIP switch for HAC-UAN480/MU	2
IV. Dimension and assembly layout HAC-UAN480/MU	3
V. Standard configuration of HAC-UAN480/MU	3
Appendix: Installation instruction for USB driver	4



I. Summarization of HAC-UAN480/MU

HAC-UAN480/MU is a kind of products that are based on Shenzhen HAC Company's standard HAC-UAN480 radio module. UAN480/MU adds USB serial port converter and a black aluminum enclosure. Please refer to the standard UAN480 manual for the more details and technical specification (such as frequency, power, sensitivity, voltage, current, distance).

II. Functions of HAC-UAN480/MU

1. It can offer USB port. It uses software and hardware to change the USB port to Serial port. So user can use serial port of the module through the USB port.

2. It can offer the LED indicator for power and sending/receiving data.

a. The power LED: Red light means the module has been electrified.

b. The signal LED: Green light means the module is receiving effective data, while Red light means the module is transmitting the effective data.

3. It can offer the selection of baud rate or parity through DIP switch.

III. Definition of DIP switch for HAC-UAN480/MU

Before using the HAC-UAN480/MU, users can do some configurations to confirm baud rate, data format and channel setup enabling according to your need. There is one group of 8-bit DIP switch in HAC-UAN480/MU. When the switch is turned to 'ON', it means '0', otherwise, it indicates '1'. The configuration methods are shown as follow:

NO.	Name	Function	Remarks
1	PW_S	Power selection	5V power supply: 1=0 50mW; 1=1 100mW
2	SP_S	Setting of the baud rate	23=00 1200bps; 23=10 2400bps;
3			23=01 4800bps; 23=11 9600bps
4		reservation	
5	F_S	8n1/8e1 selection	5=0 8n1; 5=1 8e1
6		reservation	
7		reservation	
8	SET	Setup	The using method is the same as the UAN480 standard module JP1_8.

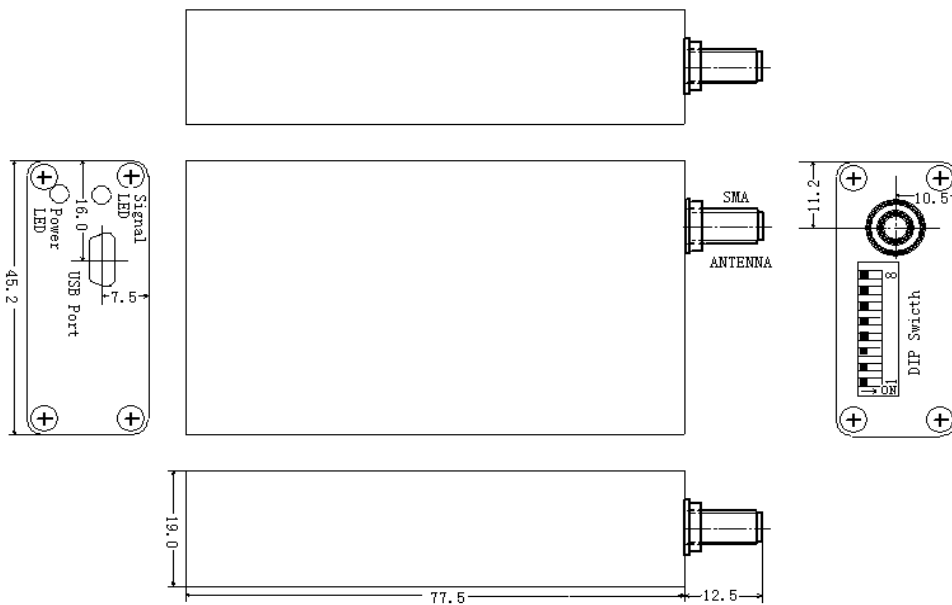
Note: Any changes of DIP switch will be effective after power up module again.

In the setting mode, users can connect Smart series with computer and change the parameter such as working channel by the Studio software or command setting.



IV. Dimension and assembly layout for HAC-UAN480/MU (mm)

1. MU is based on USB port.



V. Standard configuration of HAC-UAN480/MU



1. A 10cm helical SMA antenna with an elbow-joint
2. MU Series come with a 150cm USB cable.
3. A CD with USB-TO-RS232 driver and specification documents (every order)
4. Mounting bracket can be purchased separately. The fixing method is shown as follow.

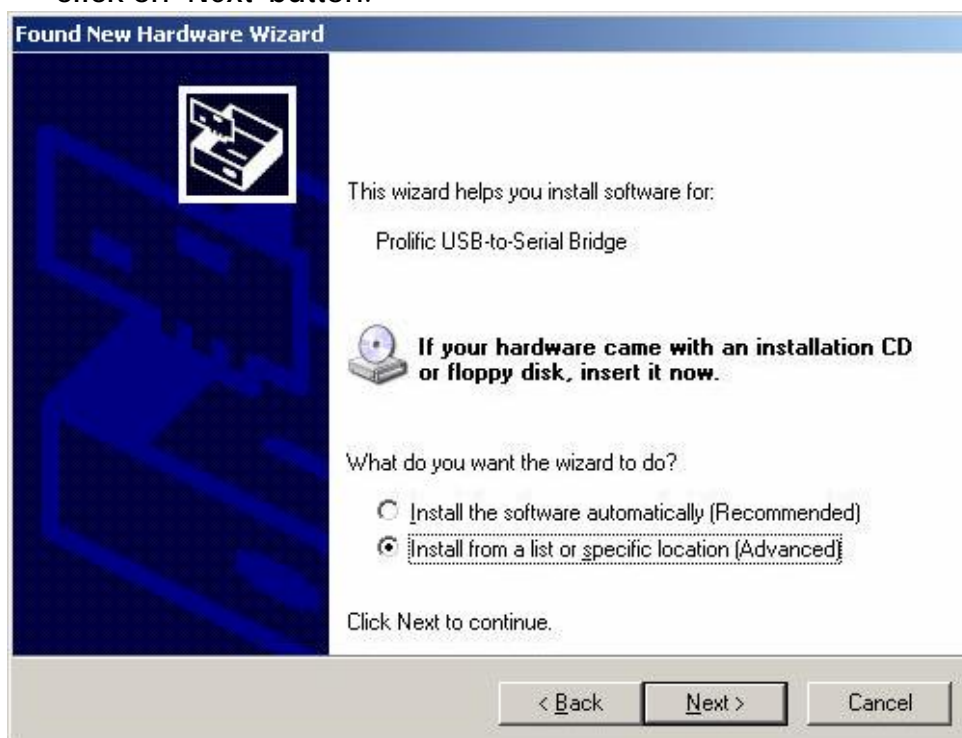


Appendix: Installation instruction for USB driver MU series (USB to RS232)

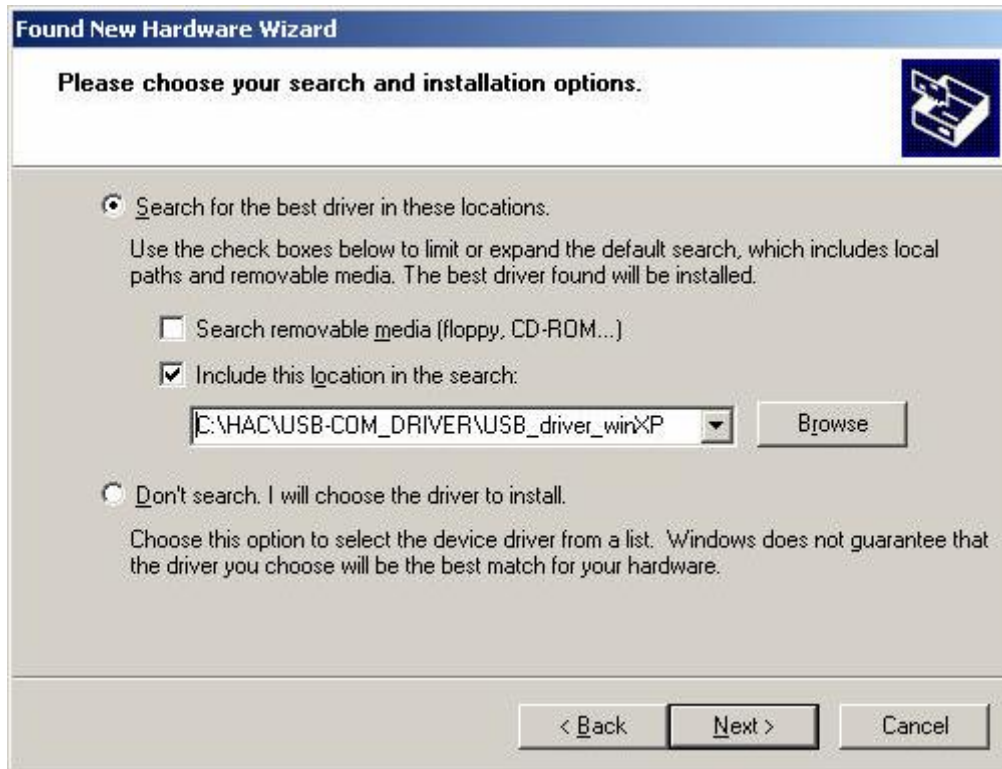
1. Connect MU USB port to the USB port of your computer. A dialog box popups as follow. Select 'No, not this time' and click 'Next'.



2. The next wizard box will show as below. Select 'Advanced' installation and click on 'Next' button.



3. In the next dialog box, please specify the path where your Windows XP driver located, and click next after the correct path is selected.



4. A warning message dialog box will appeared as below. Click 'Continue Anyway' button to start the installation.

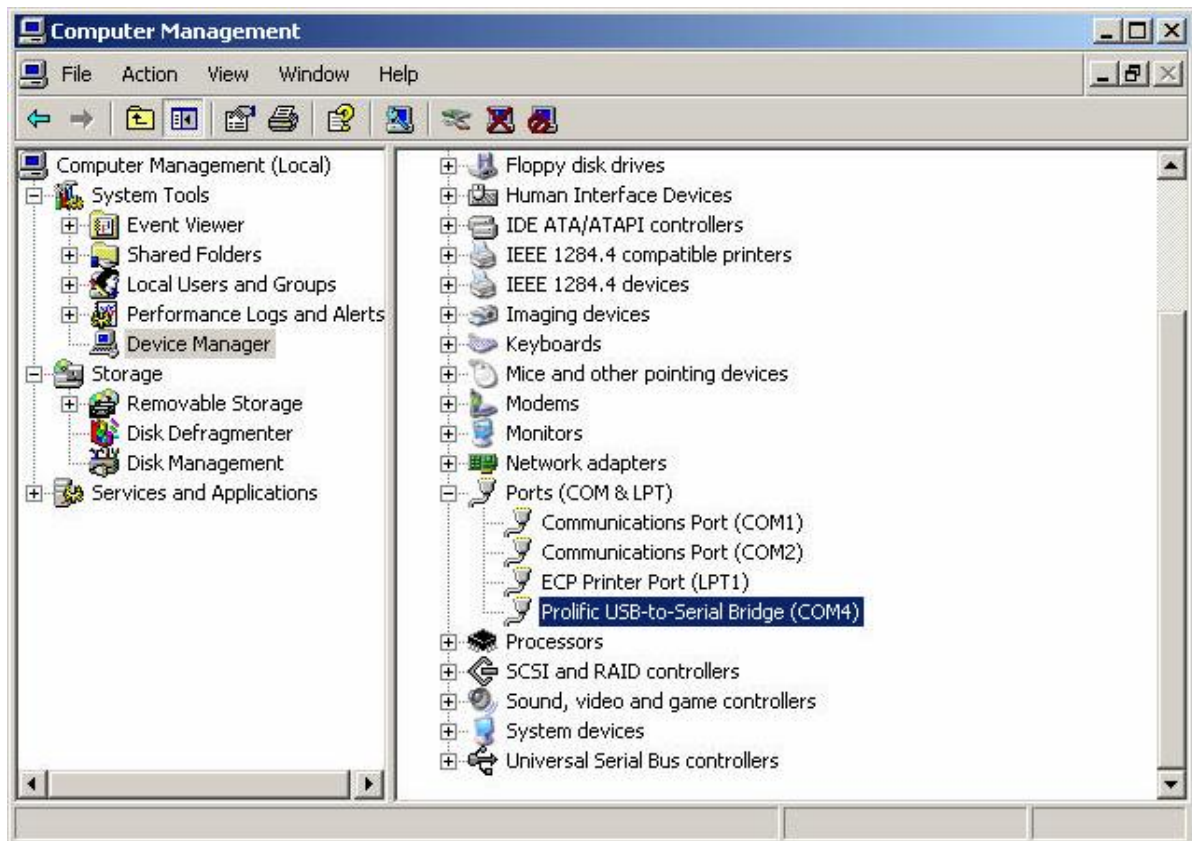




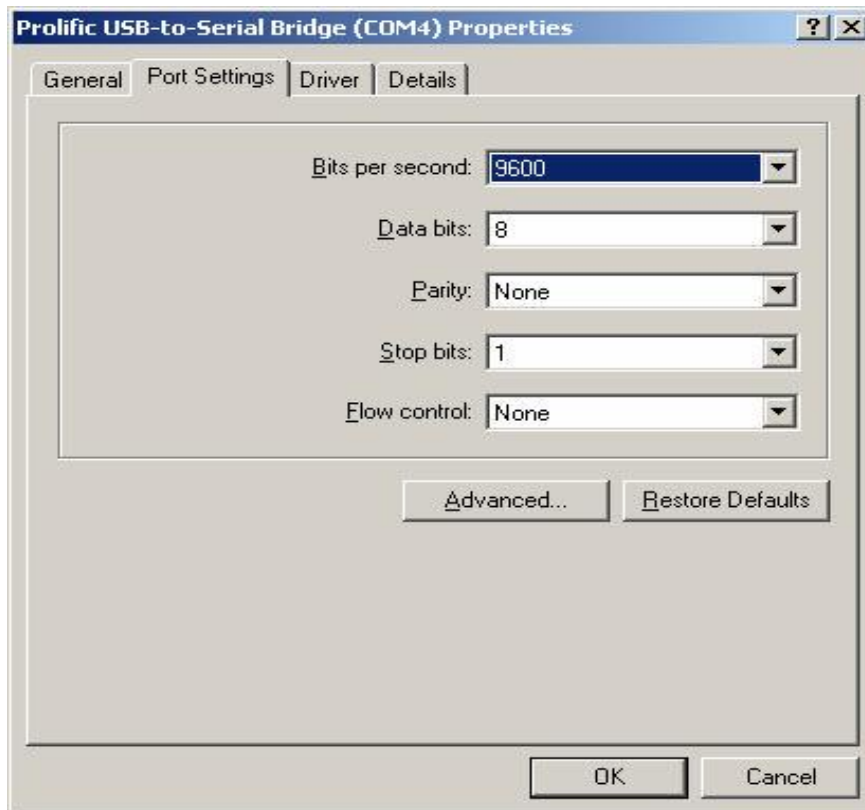
5. After the installation is completed, the following dialog box will appear. Click on the 'Finish' button to complete the installation.



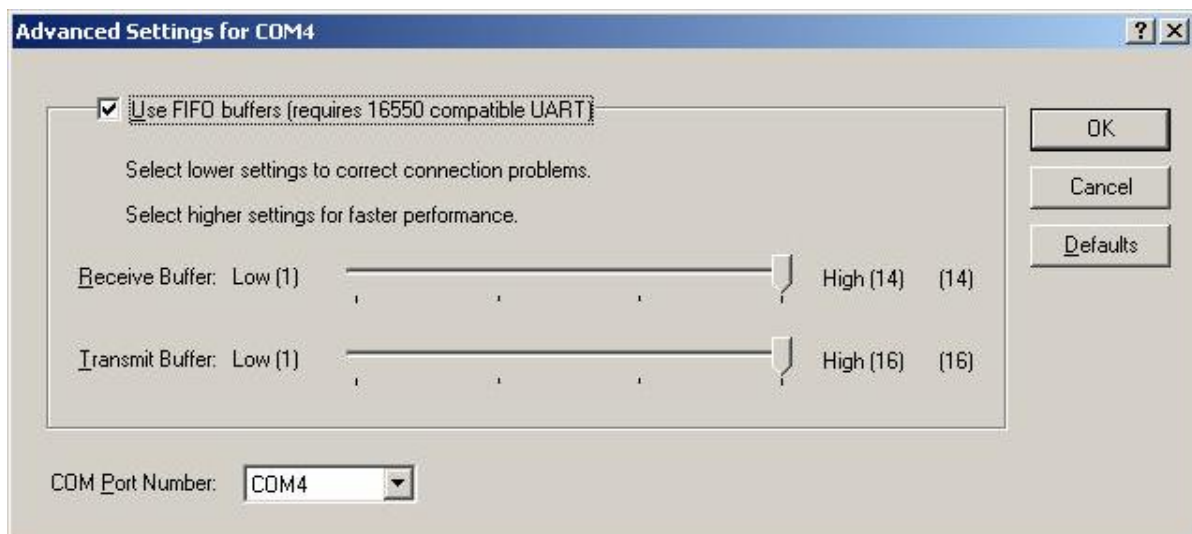
- To verify and set the parameters of the serial port, open the Computer Manager window and select on Device Manager on the left window. Open the COM port field in the right window.



7. Right click on 'Prolific USB-to-Serial Bridge (COMx)' and select on Properties. Make sure that the parameters of the properties dialog box has all the fields set as below.



8. Open additional setting by click on 'Advanced' button on the properties dialog box. Double check and make sure that the advanced setting for selected COM ports has the following settings. Click OK when it's done.



Now, the configuration of the serial port has been done. You may use the COM4 or whatever the COM port you have installed to transmit data. One last thing for using the radio modem is that, remember to check the baud rate and parity bit of COM port must be the same as the Smart device.